

18 Original wood siding should be maintained with a protective coating of paint.

Wood is the dominant building material in the Walterboro and Hickory Valley Historic Districts. To preserve the wood, it is important to maintain the painted finish of the siding.

18.1 Protect wood features from deterioration.

- Provide proper drainage and ventilation to minimize rot.
- Maintain protective coatings to retard drying and ultraviolet damage. If the building was painted historically, it should remain painted, including all trim.

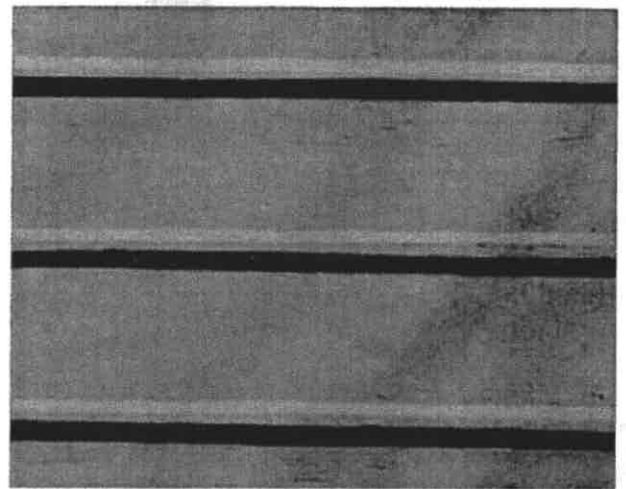
18.2 Plan repainting carefully.

- Always prepare a good substrate. Prior to painting, remove damaged or deteriorated paint only to the next intact layer, using the gentlest means possible. There is no technical reason to strip paint all the way down to the original material before repainting.
- Use compatible paints. Some latex paints will not bond well to earlier oil-based paints without a primer coat.

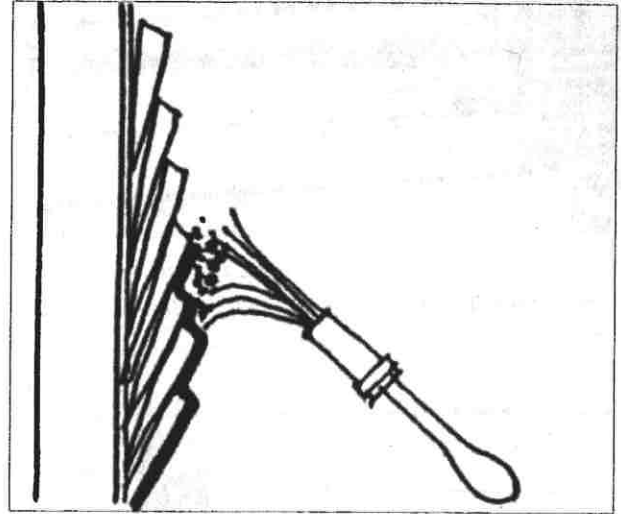
18.3 Using the historic color scheme is encouraged.

- If an historic scheme is not to be used, then consider the following:
 - Generally, one muted color is used as a background to unify the composition.
 - One or two colors are usually used for accent to highlight details and trim.
 - A single color scheme should be used for the entire exterior so upper and lower floors and subordinate wings of buildings are seen as components of a single structure.

18.4 Muted colors can help reduce the perceived scale of a building.



Protect wood features from deterioration. Maintain protective coatings to retard drying and ultraviolet damage. If the building was painted originally, it should remain painted.



Plan repainting carefully. Always prepare a good substrate. Also, use compatible paints.